

**SPECIAL  
POINTS OF IN-  
TEREST:**

**PARTICIPANT  
ACCOUNTS**

**EVALUATIONS**

**SUBSCRIPTION  
CONTEST**

**HOLIDAY  
CLOSINGS**

**JANUARY**

**BIRTHDAYS**

<b>Nathan R.</b>	1/1
<b>Amaris B.</b>	1/2
<b>William A.</b>	1/4
<b>Ian A.</b>	1/11
<b>Joseph J.</b>	1/17
<b>Turner K.</b>	1/19
<b>Taylor P.</b>	1/20
<b>Ashley K.</b>	1/21
<b>William D.</b>	1/23
<b>Daniel R.</b>	1/30

## Many Uses for Participant Accounts

This month we wanted to share with you the many ways in which people use their Participant Accounts.

Participant Accounts are funds in each person's budget that are used directly for the participant. These funds grow with each billing cycle.

One family uses the Participant Account to pay for their child's membership to *Health Adventure* located in Asheville, NC. Visit their website at [www.healthadventure.org](http://www.healthadventure.org) for more information about this health and science museum.

Another mom uses the Participant Account to contribute to her son's love for science. She

hopes soon to buy him his very own laptop so that she can have hers back! He enjoys anything related to science and when he hears stories that peak his interest in the news, he uses the computer to research topics further. This mom says, "It is important to tap into what your kids like so they are excited about learning new things and building on their interests. They will feel successful, confident and positive about their interests which will help them build self-esteem."

Need more ideas? Below are some other ways that families use their Participant Accounts:

- Mileage- community outings; doctor's appointments and therapy sessions

- Education-school tuition; tutoring; books
- Medical costs not covered by Medicaid- therapy; aid devices/equipment; prescriptions
- Home Improvements-Ramps; expansion of doorways for easy wheelchair access
- Outdoor items-trampoline; playground equipment
- Other items- bedding; towels; groceries (if participant is on a special diet)

If you would like to share unique ways that you use the Participant Account, please contact Janel at [jgreen@teamdaniel.info](mailto:jgreen@teamdaniel.info) or call 910-987-3690.

## Let the Contest Begin!



*Empowered* is a magazine project of Team Daniel Foundation. All *Empowered* Subscriptions

Contest details have been mailed to QPs, Direct Care staff, and Team Daniel Families.

The top-seller in each contest will receive a \$75 Visa Gift Card to

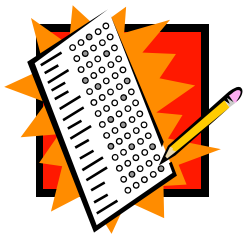
use as you please!

Please review all of the contest details and be sure to have your subscription request form along with payments returned to the main office by Monday, February 16th.

The prize will be rewarded on March 1, 2009. Happy Selling!

If you have any questions about the contest, please email Janel at [jgreen@teamdaniel.info](mailto:jgreen@teamdaniel.info) or call 910-987-3690.

# Staff Evaluations Mailed



This month we are mailing the QP and Direct Care staff evaluation forms.

We will also use this information for the Team Daniel Quality Enhancement Plan. The purpose of the Quality Enhancement Plan is to improve the way that we serve families based on the feedback you provide. So please, take your time when completing these evaluations.

Please complete these evaluations as quickly as possible and return them to the main office no later than March 1, 2009.

If you have any questions about evaluations, please contact your Regional Manager.

All evaluation results impact supervision plans for QPs and Direct Care staff.

The Americans with Disabilities Act (ADA) of 1990 is a civil rights law created to assure equal opportunity for people with disabilities in all aspects of American life. Know your rights! Please visit the following websites for more information:

- [www.disabilityinfo.gov](http://www.disabilityinfo.gov)
- [www.ada.gov/cguide.htm](http://www.ada.gov/cguide.htm)

**This newsletter is also**

**available on our website**

[www.teamdaniel.info](http://www.teamdaniel.info)

# Welcome to Holland By Emily Perl Kingsley

I am often asked to describe the experience of raising a child with a disability - to try to help people who have not shared that unique experience to understand it, to imagine how it would feel. It's like this.....

When you're going to have a baby, it's like planning a fabulous vacation trip - to Italy. You buy a bunch of guide books and make your wonderful plans. The Coliseum. The Michelangelo David. The gondolas in Venice. You may learn some handy phrases in Italian. It's all very exciting.

After months of eager anticipation, the day finally arrives. You pack your bags and off you go. Several hours later, the plane lands. The stewardess comes in and says, "Welcome to Holland."

"Holland?!?" you say. "What do you mean Holland?? I signed up for Italy! I'm supposed to be in Italy. All my life I've dreamed of going to Italy." But there's been a change in the flight plan. They've landed in Holland and there you must stay.

The important thing is that they haven't taken you to a horrible, disgusting, filthy place, full of pestilence, famine and disease. It's just a different place.

So you must go out and buy new guide books. And you must learn a whole new language. And you will meet a whole new group of people you would never have met.

It's just a different place. It's slower-paced than Italy, less flashy than Italy. But after you've been there for a while and you catch your breath, you look around.... and you begin to notice that Hol-

land has windmills....and Holland has tulips. Holland even has Rembrandts.

But everyone you know is busy coming and going from Italy... and they're all bragging about what a wonderful time they had there. And for the rest of your life, you will say "Yes, that's where I was supposed to go. That's what I had planned."

And the pain of that will never, ever, ever go away... because the loss of that dream is a very very significant loss.

But... if you spend your life mourning the fact that you didn't get to Italy, you may never be free to enjoy the very special, the very lovely things ... about Holland.

**Thank you Barbara Revis for sharing this wonderful prose!**

# Main Office Closings

**Our office will be closed Monday, January 19th in observance of Martin Luther King Day**

